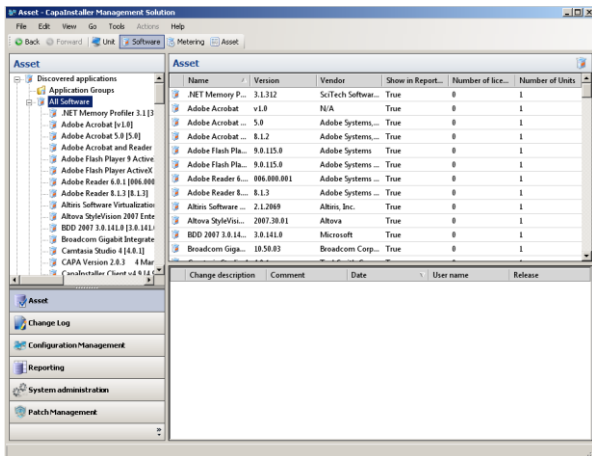


# Capalnstaller®

## Asset Management – Technical datasheet

**Capalnstaller Asset Management is a dynamic solution that provides a comprehensive overview of all software, hardware, devices, user accounts and other elements in use throughout your network. All inventory details can be viewed from the centralized console, which enables managers to filter, group and sort the data in a variety of useful ways. A handy Reporter tool makes it easy to generate customized, informative reports.**



### Complete asset and inventory view

With Capalnstaller Asset Management, the managing of your assets has never been easier. With this solution it is possible to manage the company's assets including software, hardware, PDA's, printers, scanners and also office furniture, etc. it is also possible to create custom device types for maximum flexibility.

### Effective Asset Management

Many organizations use a large part of their operating budget on software licenses, but often pay little attention to what happens to the software once it is installed. Licenses can sit unused on computers scattered throughout the organization even while new licenses are being purchased at additional cost to support new workstations. Conversely, an organization may find that too many

copies have been installed, thereby spending money on unnecessary licenses. .

Capalnstaller Asset Management solves these problems by making it easy for IT administrators to keep track of application usage, and how many licenses are installed and where they are used.

### Comprehensive Software Inventory

Software inventory details include a full list of all versions of each software application installed on any server, workstation or Windows Mobile client in the network. System Administrators can also see exactly which versions are installed on any machine or a full list of all machines using any given package. A new feature, file based inventory, will combined with normal "registry based" inventory collection; give a more complete picture of installed applications on the computer. This completes the centralized overview of all installed products throughout the network. Software Inventory works both for Citrix Terminal servers and Windows based operating systems. The software inventory module on Citrix register published applications and which uses has been granted access to these.

### License Metering

With License Metering you can keep track of when each program was last used on each workstation, by whom and for how long. Software suite components such as Word, Excel and Outlook can even be metered separately to determine if the correct suite is installed for each user or if a smaller suite or single application would do. Metering enables administrators to see when they should remove licenses from workstations where they are not being used and transfer them to where they are needed rather than spend money on new licenses.

### License Management

With License Management it is possible to define the number of licenses for a group of applications, or a single application. If your organizations budget software licenses by department, Capalnstaller Asset Management also allows you to define li-



CapaSystems

We optimize and simplify your IT operations

censes per department. This gives great flexibility to the license management process.

### Query based groups

With query based application and metering groups, it's possible to make dynamic self updating groups. It's possible to define licenses for a specific version, or from that version and up. Effectively this result in license information being collected, even if an already installed version of a product is being updated.

### License Check

License check helps to ensure that license agreements newer gets violated. The system keeps a running total of the number of licenses that are installed, compares this to the number you have purchased.

### Support for Citrix Terminal Server

For organizations using Citrix Terminal Server, CapaInstaller Asset Management is able to monitor published applications. For each of the applications start, stop and user credentials are logged

### Forbidden Applications

To help enhance security and maintain productivity, administrators can forbid specific applications from being run on client computers. If a user tries to execute a forbidden application, the CapaInstaller Agent will terminate the application.

### User Inventory and Logon History

Track are being kept of each individual network user. Details such as: logging user name, domain, primary workstation, login times, etc. can be collected for all users.

### Hardware Inventory

Hardware inventory enables Administrators to check the components of any computer without needing to travel to the physical machine or open its enclosure. For example, out-of-date components or computers lacking disk space for newer applications can be found instantly anywhere in

the network. It is also easy to make a consolidated list of hardware, or finding a machine with a bad bios. Also when distributing new software and operating systems, hardware requirements often need to be considered.

*Hardware inventory:* includes extensive details about each computer, including: system BIOS, serial number, System type, RAM size, OS details, network MAC address, hard-disk size and free space, graphic card details, port selections, peripherals and more. Hardware inventory can collect details from servers, workstations and Windows Mobile clients.

### Expanded Asset Management

In addition to the automatically collected information, the CapaInstaller Asset Management application enables Administrators to define, view and enter details on any asset. You can even create entries and enter details for non-managed devices such as printers, scanners, cameras, etc. Use this feature to store information such as supplier, warranty dates, location, prices, etc. for all of your network assets. In addition, any type of file can be attached to any item, thereby making it easy to find service agreements, PDF manuals, license agreements, support details and more.

### Create Custom Inventories

In addition to the standard modules, Asset Management includes customizable inventory modules that Administrators can modify with their own script commands, to collect any type of information about each client. For example, custom scripts can be developed to report specific registry values or to deduce the department a machine belongs to based on 3 party informations (AD, HR).

### Realtime reports

With CapaInstaller Asset Management comes CapaInstaller Reporting, it is a centralized place for making reports on all the assets, informative reports can be generate, based on all types of inventory data. Because Administrators choose



# CapaInstaller®

## Asset Management – Technical datasheet

---

precisely which data to include, using both static and dynamic criteria, each report can be extremely concise and focused. CapaInstaller Reporting now comes with Pre defined reports which covers many daily reporting tasks. Some of the reports will be useful for measuring KPI's, budget figures and performance management while others are for trend analysis and simple configuration management use. The reports can be printed out, saved as text, imported into other applications or generated in Microsoft Excel format. CapaInstaller Management Solution (CMS) has a web based real-time reporting tool for maximum flexibility (Reporting Services). To use this tool Microsoft SQL reporting services has to be installed. CMS integrated with Reporting Services, which makes it possible to view the reports in a browser without even having CMS installed.

**Microsoft®**  
**GOLD CERTIFIED**  
*Partner*

Information Worker Solutions  
ISV/Software Solutions

### **CapaInstaller Platform & Modules**

CapaInstaller Asset Management operates on top of the CapaInstaller System, which is included and provides the required infrastructure. Additional CapaInstaller solutions are easy to add when the infrastructure is in place. An agent program running on each client regularly submits updated inventory details to a central place, where a service collect, organizes and processes the data to the SQL Server database. The database makes it available for use in the Asset Management and Reporting plug-in.

### **Client Requirements**

The CapaInstaller Client must be installed on each machine where the generated packages will run. Minimum requirements: Windows 2000 SP4

### **Server Requirements**

The CapaInstaller System runs on Windows 2000 SP4 or newer, Microsoft SQL Server 2005 or newer

### **About CapaSystems**

CapaSystems develops and delivers innovative Windows management solutions.

For more info please visit [www.capasystems.com](http://www.capasystems.com).



**CapaSystems**

We optimize and simplify your IT operations