

CapalInstaller®

Configuration Management – Technical datasheet

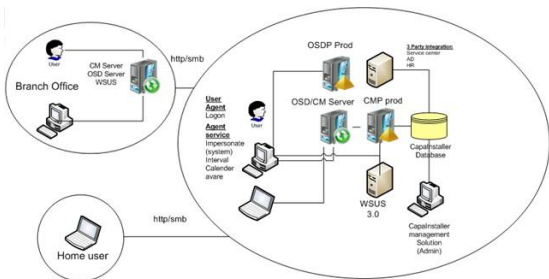
CapalInstaller Configuration Management offers a centralized system for packaging, deploying, monitoring and maintaining software installations for all Microsoft Windows based clients, servers and Pocket PCs. The system can perform advanced software deployment with or without end-user intervention and without requiring IT staff to visit the target clients.

Complete client organization and overview

CapalInstaller Configuration Management enables administrators to distribution and track installations as they are deployed to clients across the network. All jobs are monitored by the system, with detailed status information displayed in the central console and/or sent to a system administrator by e-mail. In addition to deployment, you can also uninstall selected applications from any client. The solution helps to ensure optimal performance on all computers while reducing the cost and effort required for administration, installation, maintenance and support.

Centralized Software Distribution

CapalInstaller is designed to fit into any organization's network structure. Any number of management servers can be established, on almost any Microsoft operating systems, and on almost all hardware, even on NAS boxes. This enables deployment in large, multi-site environments without overloading the network, interrupting high priority traffic or inconveniencing users.



Features such as package scheduled with expiration date, package release and execution date ensures that managers can deploy software according to both user needs and management priorities.

What you see is what you need

Simplifying and securing management is an ongoing challenge. This is why the CapalInstaller Security model allows administrators to configure, who is allow to see, and who is allowed to do what on different components. This helps tighten the security, heighten the usability, and in the end increase productivity.

Manage recourses

With Configuration Management you can organize and manage your recourses as you see fit. Organize computers, into groups; deploy software to pda's or link printers, scanners and other devises to different users. Furthermore every action is automatically recorded in a change log. This adds the benefit of history; making troubleshooting at an earlier stage possible as well as providing information for several Problem Management disciplines.

Technical advantages

Realtime reports: With CapalInstaller Configuration Management comes CapalInstaller Reporting. CapalInstaller Reporting is a centralized place for making query's and reports. This plug-in gives you amongst other things, full reports on installed software, and there is even a web based real-time reporting tool for maximum flexibility.

Wake-on-LAN (WoL) support: Many organizations prefer to run software installation and maintenance packages at night, while computers are not otherwise in use. CapalInstaller can therefore be scheduled to wake sleeping computers for automated management at any time using WoL, thereby optimizing administration costs.

WAN & Mobile Clients: CapalInstaller provides extra support for WAN connections and mobile clients through download-before-install, bandwidth regulation and download-resume functionality. Clients locate their distribution points dynamically, so mobile clients will always choose the closest Management server from which to fetch software packages.

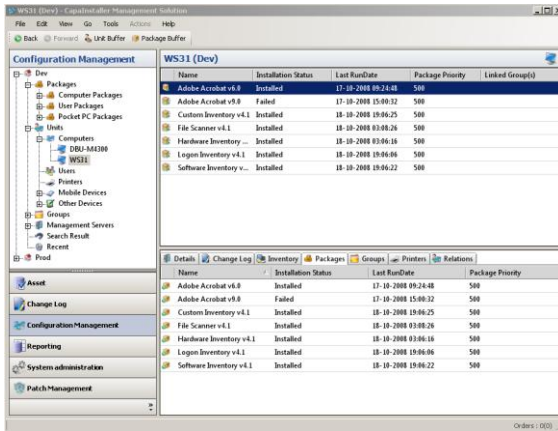


CapaSystems

We optimize and simplify your IT operations

CapalInstaller®

Configuration Management – Technical datasheet



Pocket PC Clients: In addition to Windows desktops and servers, CapalInstaller can also install and maintain software on Pocket PCs running Windows Mobile or Windows CE.

Software Catalog: Not all software installations are mandatory. Managers can therefore mark optional packages to be listed in a catalog rather than installed automatically. Users can review the catalog at any time and use it to select and install whatever software they need. Each catalog item can be made available to all users or restricted to specific groups.

Silent or Interactive Installs: Software can be deployed with or without end user intervention and without requiring IT staff to visit the target clients. Interactivity with end users and multi-language messaging help provide flexibility and ensure high success rates. Deployment can run in silent, attended (with end-user messaging) or request-log-off mode.

Integrated printer management: Configuration Management now comes with integrated printer management; with one click you can get rid of the printer connection nightmare and with a single click, link a user to a printer. It's also possible to delegate control to service desk.

NAS support & basic/advanced sync: With Network-attached storage (NAS) Support you can use a NAS box as a deployment server. You can push all the needed files to the NAS box from a parent server or point. This feature can also be useful in a workgroup environment where validation is problematic.

HTTP(s) based deployment: This new feature allows package distribution, OS reinstallation, and inventory collection through http/https. CapalInstaller Agent can communicate over http/https, which allows out-of-office workers to be connected to CMS without setting up a VPN connection. This new feature will result in more people being connected to CMS and thus easing the release management process.

Group overview

To help IT managers get a comprehensive overview and work more quickly, CapalInstaller organizes computers and users into several types of logical groups. Managers can then deploy software packages to all members of any group using easy "drag and drop" operations in the console. Group types include:

- **Static Groups:** are manually created and populated to fit your organization.
- **Active Directory Groups:** use AD as a deployment structure.
- **Dynamic Inventory Groups:** are populated based on queries from the Reporter plugin (requires CapalInstaller Asset Management).
- **Department Groups:** organize clients according to the department in which they are used (requires CapalInstaller Asset Management).

Software Packaging

Fast and efficient packaging is the crucial first step to ensuring successful software distribution. CapalInstaller provides a solution that enables you to create network-based installation packages for





CapaInstaller®

Configuration Management – Technical datasheet

all types of applications, regardless of the installation technologies originally used by the vendors.

Repackaging to MSI

The Windows Installer (MSI) is the preferred Microsoft standard for creating software installers. MSI technology is extra powerful because it is built into the operating system. CapaInstaller ezMSI enables you to generate Windows Installer (MSI) packages for any application. This is done regardless of the installer technology used by the original manufacturer is MSI or another format.

Create Installation Packages

CapaInstaller Package Creator is a rapid-development tool for generating software-installation packages. The resulting packages are optimized to ensure the highest possible success rate with little or no end-user interaction. Package Creator benefits include:

- A much shorter development cycle.
- A common platform with scripts easy to understand and share between authors
- Thoroughly tested scripting and deployment functions that guarantee the highest possible success rate, often as high as 99-100%.

Latest features in Package Creator

Updated CapaInstaller Scripting Library (formerly known as Capalib).

Package Creator 4.9 now supports Microsoft SoftGrid 4.2 and Microsoft Application Virtualization 4.5. The integration is based on Microsoft guide lines and best practices.

Package Creator and the CapaInstaller client is tested on the following x64 and x86 platforms: Windows XP, Windows 2003, Windows Vista & Windows 2008 .

CapaInstaller Package Creator and SoftGrid

CapaInstaller Package Creator has been integrated with Microsoft SoftGrid. The solution en-

ables customers to pre-cache applications that have been virtualized with SoftGrid.

Integration with DeepFreeze 5.0

CapaInstaller Management Solution has been integrated with Deep Freeze v5.0. When the integration is enabled it is possible to maintain protected computers.

CapaInstaller System

CapaInstaller Configuration Management operates on top of the CapaInstaller System, which is included with the solution and provides the required infrastructure. The CapaInstaller System works silently and reliably, placing very little demand on its clients. Distributed networks are supported by remote management servers, package synchronization, resumable downloads and managed bandwidth.

Additional CapaInstaller solutions are easy to add once the system is in place. Simply enter a new license key and the new functionality is instantly available, without any extra installation.

Client Requirements

The CapaInstaller Client must be installed on each machine where the generated packages will run. Minimum requirements: Windows 2000 SP3

Server Requirements

The CapaInstaller System runs on Windows Server 2003 (Including x64 and R2) or newer, Microsoft SQL Server 2005 or newer

About CapaSystems

CapaSystems develops and delivers innovative Windows management solutions.

For more info please visit www.capasystems.com



Information Worker Solutions
ISV/Software Solutions



CapaSystems

We optimize and simplify your IT operations